

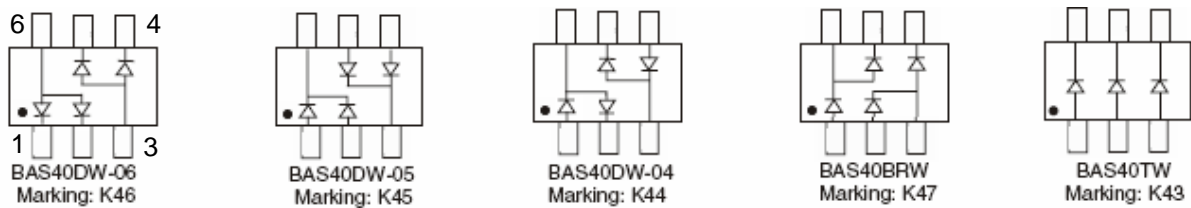


### BAS40TW\_DW\_04\_05\_06 Plastic-Encapsulate Transistors

#### SCHOTTKY BARRIER DIODE ARRAYS

#### FEATURES

- Low Forward voltage drop
- Fast switching



#### Maximum Ratings and Electrical Characteristics, Single Diode @Ta=25°C

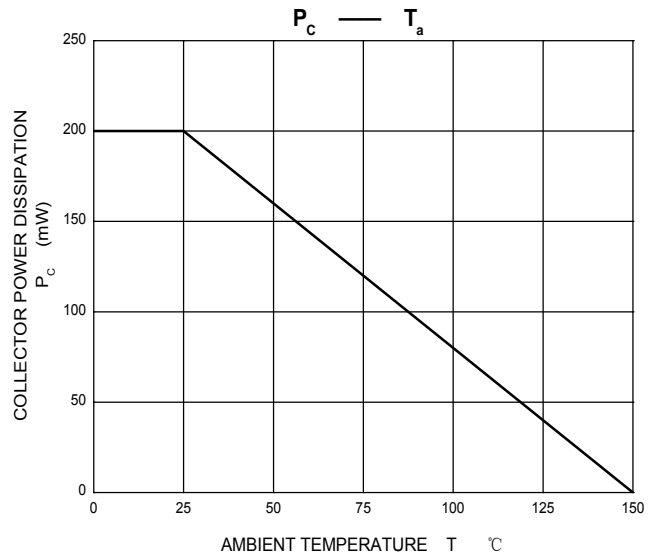
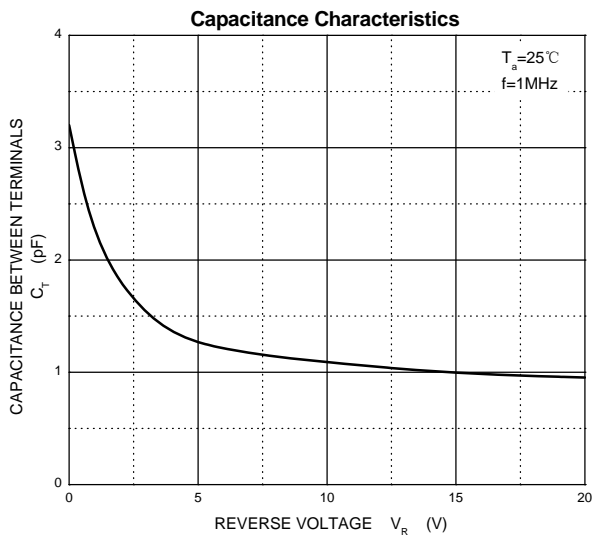
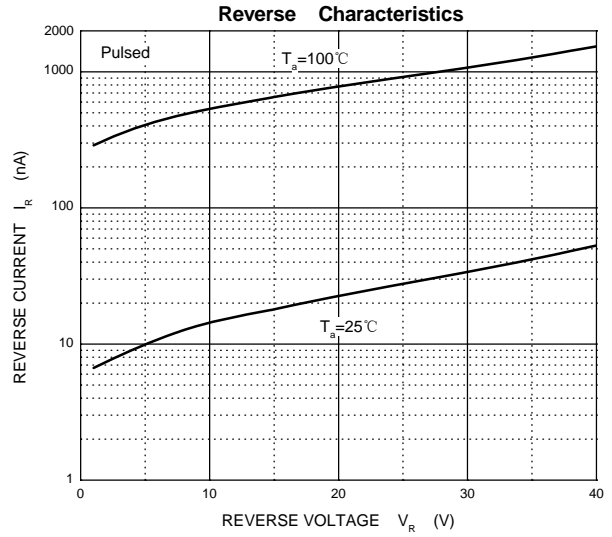
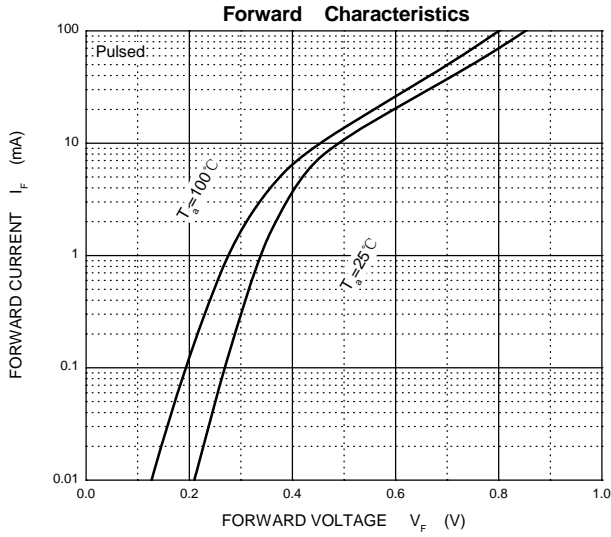
Parameter	Symbol	Limits	Unit
Non-Repetitive Peak reverse voltage DC Blocking Voltage	$V_{RM}$ $V_R$	40	V
Average Rectified Output Current	$I_O$	200	mA
Power Dissipation	$P_d$	200	mW
Thermal Resistance. Junction to Ambient Air	$R_{\theta JA}$	625	°C/W
Junction temperature	$T_J$	125	°C
Storage temperature range	$T_{STG}$	-65-125	°C

#### Electrical Ratings @Ta=25°C

Parameter	Symbol	Test conditions	MIN	MAX	UNIT
Reverse breakdown voltage	$V_{(BR)}$	$I_R=10\mu A$	40		V
Reverse voltage leakage current	$I_R$	$V_R=30V$		200	nA
Forward voltage	$V_F$	$I_F=1mA$ $I_F=40mA$		380 1000	mV
Total capacitance	$C_T$	$V_R=0, f=1MHz$		5	pF
Reverse recovery time	$t_{rr}$	$I_F=10mA, I_R=I_F=1mA$ $R_L=100\Omega$		5	ns

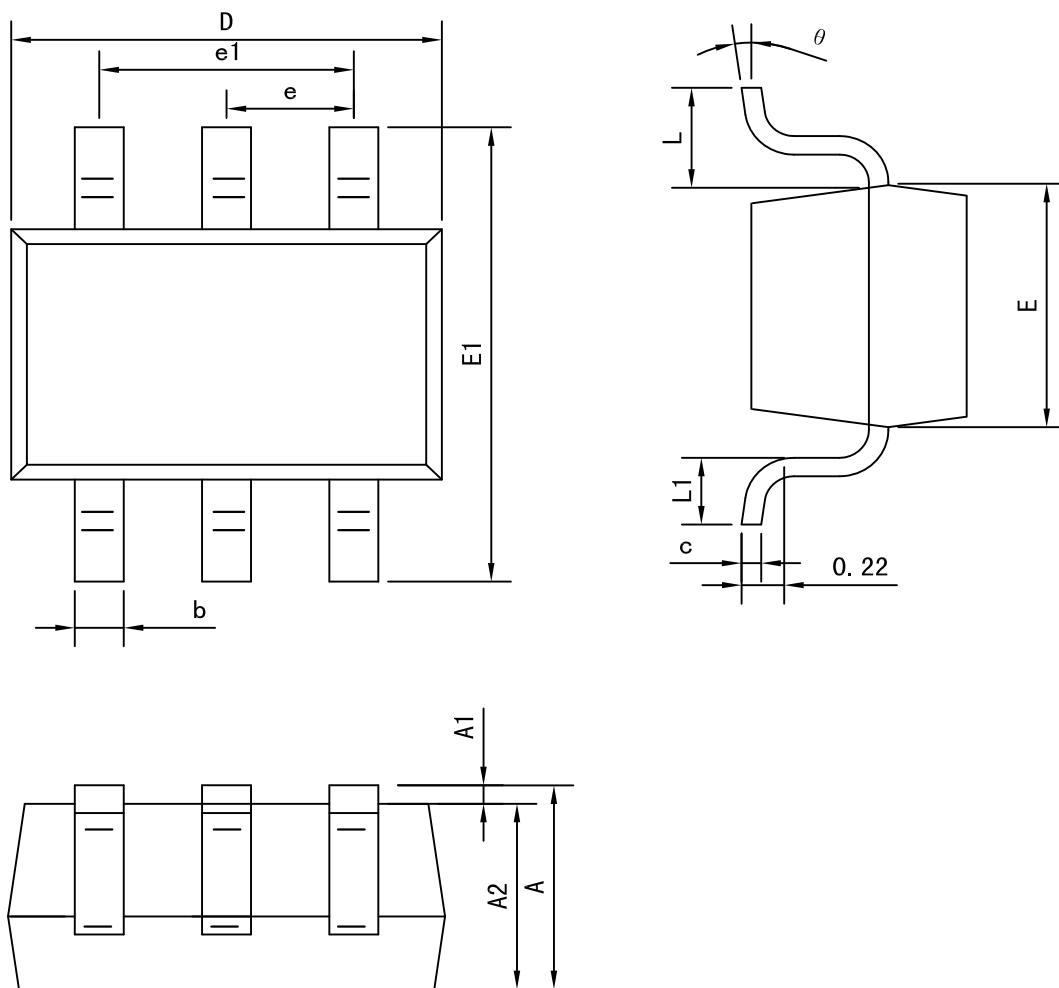


## Typical Characteristics





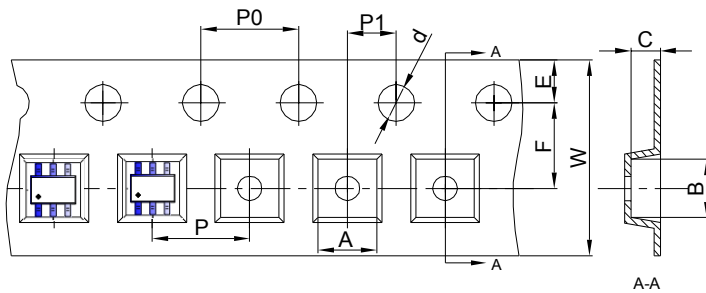
## SOT-363 Package outline dimensions



Symbol	Dimension in Millimeters	
	Min	Max
A	0.900	1.100
A1	0.000	0.100
A2	0.900	1.000
b	0.150	0.350
c	0.080	0.150
D	2.000	2.200
E	1.150	1.350
E1	2.150	2.450
e	0.650 TYP	
e1	1.200	1.400
L	0.525 REF	
L1	0.260	0.460
θ	0°	8°



### SOT-363 Embossed Carrier Tape



#### Packaging Description:

SOT-363 parts are shipped in tape. The carrier tape is made from a dissipative (carbon filled) polycarbonate resin. The cover tape is a multilayer film (Heat Activated Adhesive in nature) primarily composed of polyester film, adhesive layer, sealant, and anti-static sprayed agent. These reeled parts in standard option are shipped with 3,000 units per 7" or 17.8cm diameter reel. The reels are clear in color and is made of polystyrene plastic (anti-static coated).

Dimensions are in millimeter										
Pkg type	A	B	C	d	E	F	P0	P	P1	W
SOT-363	2.25	2.55	1.20	Ø1.50	1.75	3.50	4.00	4.00	2.00	8.00

### SOT-363 Tape Leader and Trailer

